

Specification Sheet

Quantum Dot Liquid Crystal

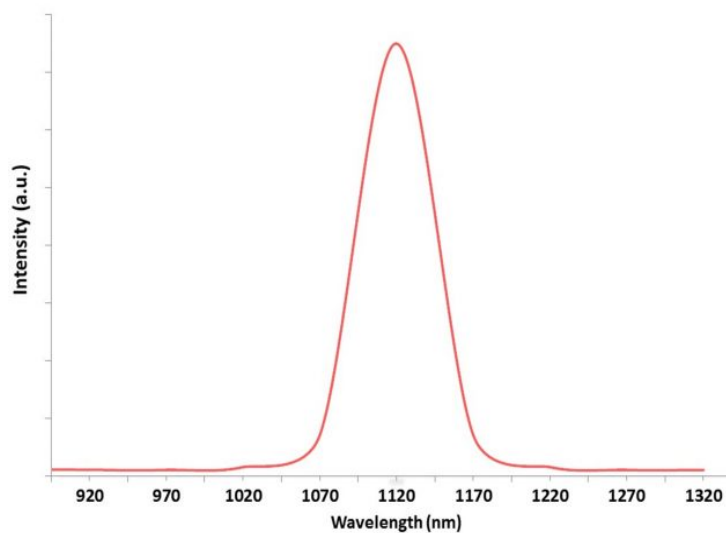
(Lead Sulphide-PEG-NH \square Quantum Dots)

Stock No: NS6130-12-000233, CAS: 1314-87-0

Product	:	Lead Sulphide-PEG-NH\square Quantum Dots
Stock No.	:	NS6130-12-000233
CAS	:	1314-87-0
Purity	:	99.9%
Composition	:	PbS
Emission Peak	:	1120 \pm 50nm
Surface Group	:	PEG-NH \square
Solvent	:	Water
Application	:	Bio-Conjugation with Bio-Molecules
Main Inspect Verifier	:	Manager QC

Note: Product Specification are subject to amendment and may change over time

Characterization of Quantum Dot Liquid Crystal



Lead Sulphide-PEG-NH₂ Quantum Dots



NANOSHEL
Creating Miracles in Black