

Specification Sheet

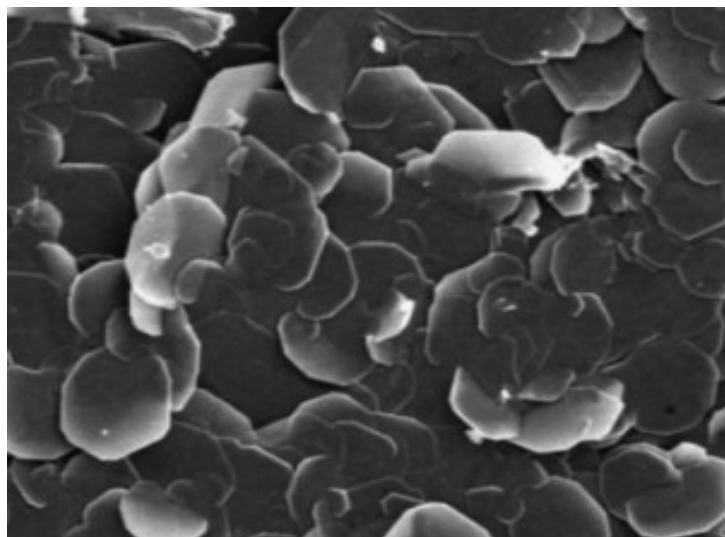
Tin Chloride Nanopowder

Stock No: NS6130-12-000271, CAS: 7772-99-8

Product	:	Tin Chloride Nanopowder
Stock No	:	NS6130-12-000271
CAS	:	7772-99-8
Purity	:	99.9%
APS	:	80-100nm
Crystallographic Structure	:	Layer Structure
Form	:	Crystalline Powder
Color	:	White
Melting Point	:	247 °C
Boiling Point	:	623 °C
Atomic Weight	:	189.60 g/mol
Morphology	:	SnCl ₂
Vapor Pressure	:	25Gms, 50Gms, 100Gms and larger quantities
True Density	:	3.95 g/cm ³
Solubility in water	:	83.9 g/100ml (0°C)
Solubility	:	Water, Ethanol, Acetone
Main Inspect Verifier	:	Manager QC

Note: Product Specification are subject to amendment and may change over time

Characterization of Tin Chloride Nanopowder



SEM Analysis of Tin Chloride



NANOSHEL
Creating Miracles in Black