

Specification Sheet

Tin II Sulfide Nanopowder

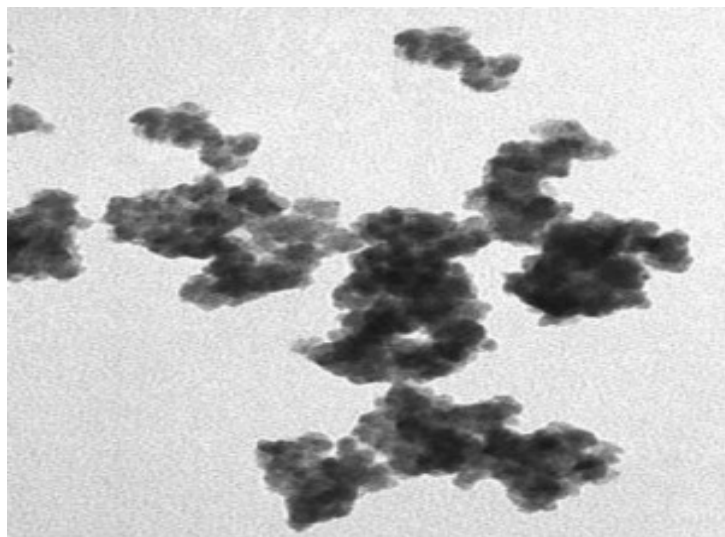
(SnS, Purity: 99.9%)

Stock No: NS6130-12-000251, CAS: 1314-95-0

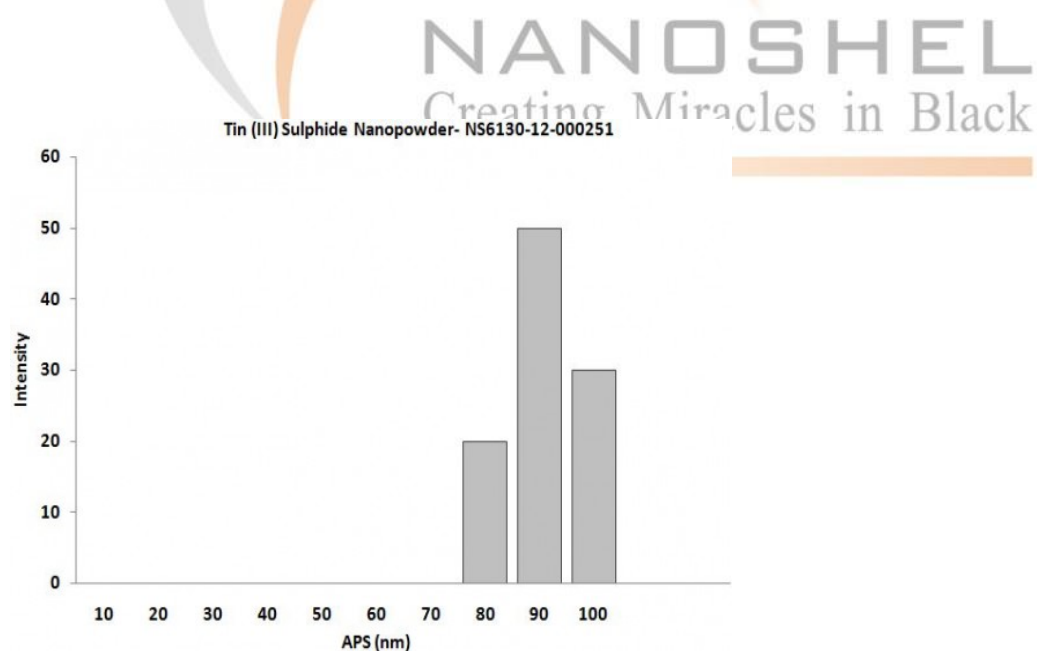
| | | |
|------------------------------|---|---|
| Product | : | Tin II Sulfide Nanopowder |
| Stock No. | : | NS6130-12-000251 |
| CAS | : | 1314-95-0 |
| APS | : | 80-100 nm |
| Molecular Formula | : | SnS |
| Molecular weight | : | 150.775 g/mol |
| Appearance | : | Dark Brown Powder |
| Density | : | 5.22 g/cm ³ |
| Melting point | : | 882 °C |
| Crystallographic Structure | : | GeS type (orthorhombic) |
| Solubility In Water | : | Insoluble |
| Available Quantities | : | 25Gms, 50Gms, 100Gms and larger quantities |
| Main Inspect Verifier | : | Manager QC |

Note: Product Specification are subject to amendment and may change over time

Characterization of Tin II Sulfide Nanopowder



SEM Analysis of Tin II Sulfide Nanopowder



Size Analysis of Tin II Sulfide Nanopowder