

## Specification Sheet

Molybdenum Carbide Powder

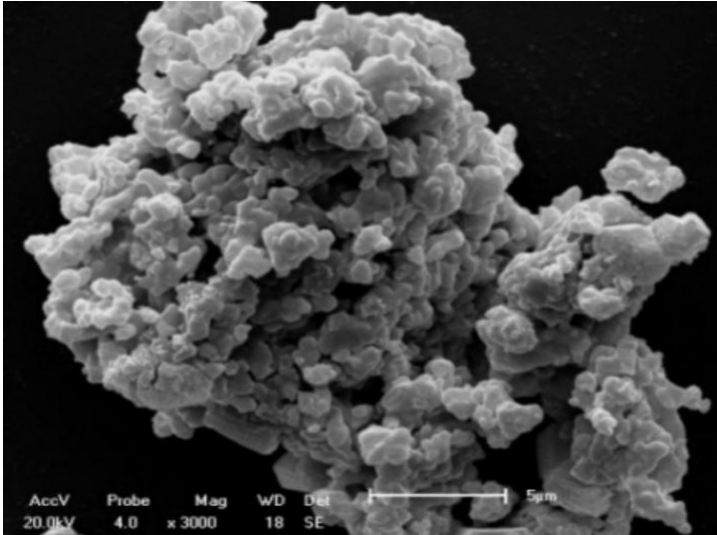
(Mo<sub>2</sub>C, Purity: 99.9%, APS: 5-10 $\mu$ m)

Stock No: NS6130-12-000324 , CAS: 12069-89-5

<b>Product</b>	:	<b>Molybdenum Carbide Powder</b>
Stock No	:	NS6130-12-000324
CAS	:	12069-89-5
APS	:	5-10 $\mu$ m
Purity	:	99.9%
Molecular Formula	:	Mo <sub>2</sub> C
Molecular Weight	:	203.89 g/mol
Form	:	Powder
Density	:	9.18 g/cm <sup>3</sup>
Melting Point	:	2690 °C
Solubility	:	Insoluble in water
<b>Main Inspect Verifier</b>	:	<b>Manager QC</b>

**Note:** Product Specification are subject to amendment and may change over time

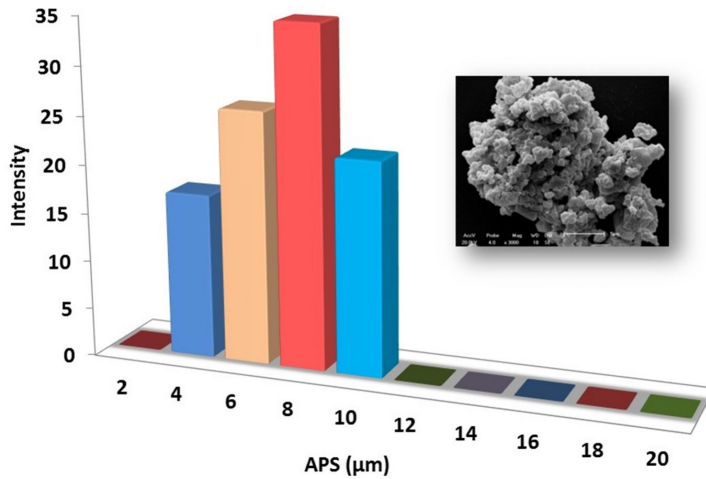
## Characterization of Molybdenum Carbide Powder



SEM - Molybdenum Carbide Powder

NANOSHEL  
Creating Miracles in Black

Molybdenum Carbide Powder - NS6130-12-000324



Particles Size Analysis - Mo<sub>2</sub>C Powder