

Specification Sheet

Bismuth Telluride Powder

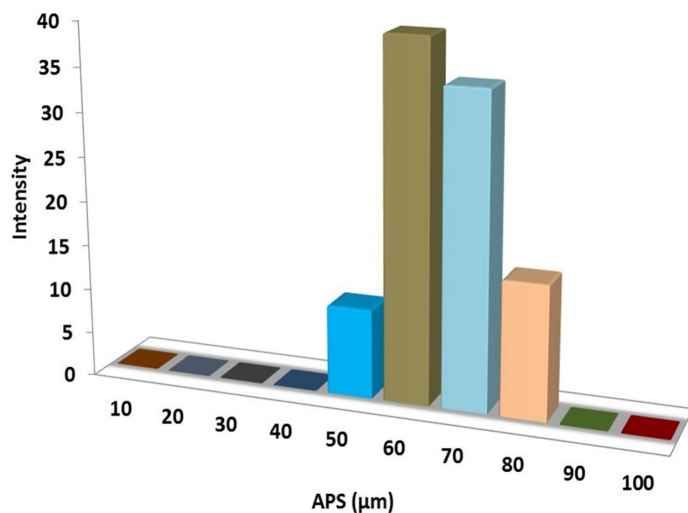
(Bi₂Te₃, Purity: >99.9%, APS: 60-70µm)

Stock No: NS6130-12-000436 , CAS: 1304-82-1

Product	:	Bismuth Telluride Powder
Stock No	:	NS6130-12-000436
CAS	:	1304-82-1
APS	:	60-70µm
Purity	:	>99.9 %
Molecular Formula	:	Bi ₂ Te ₃
Molecular Weight	:	800.76g/mol
Form	:	Powder
Color	:	Grey
Density	:	7.74 g/cm ³
Melting Point	:	586 °C
Solubility	:	Soluble in Ethanol
Main Inspect Verifier	:	Manager QC

Note: Product Specification are subject to amendment and may change over time

Characterization of Bismuth Telluride Powder



Bismuth Telluride Powder

