

Specification Sheet

Lithium Sulfide Powder

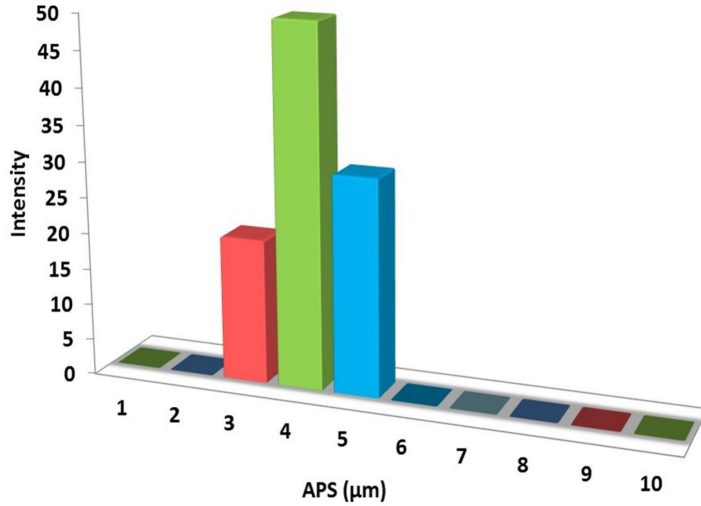
(Li₂S, Purity: >99%, APS: 3-5 μ m)

Stock No: NS6130-12-000749, CAS: 12136-58-2

Product	:	Lithium Sulfide Powder
Stock No	:	NS6130-12-000749
CAS	:	12136-58-2
APS	:	3-5 μ m
Purity	:	>99%
Molecular Formula	:	Li ₂ S
Molecular Weight	:	45.95g/mol
Form	:	Powder
Color	:	white/off-white
Density	:	1.66g/cm ³
Melting Point	:	900-975 °C
Solubility	:	Soluble in water and ethanol
Main Inspect Verifier	:	Manager QC

Note: Product Specification are subject to amendment and may change over time

Characterization of Lithium Sulfide Powder



Particles Size Analysis – Li₂S Powder

