

Specification Sheet

Sodium Sulfate Powder

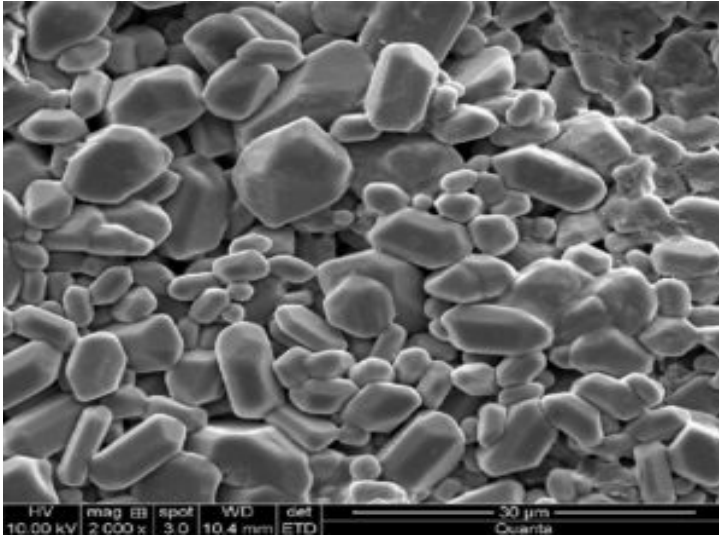
(Na₂SO₄, Purity: 99.9%, APS: 40-60µm)

Stock No: NS6130-12-000938 , CAS: 7757-82-6

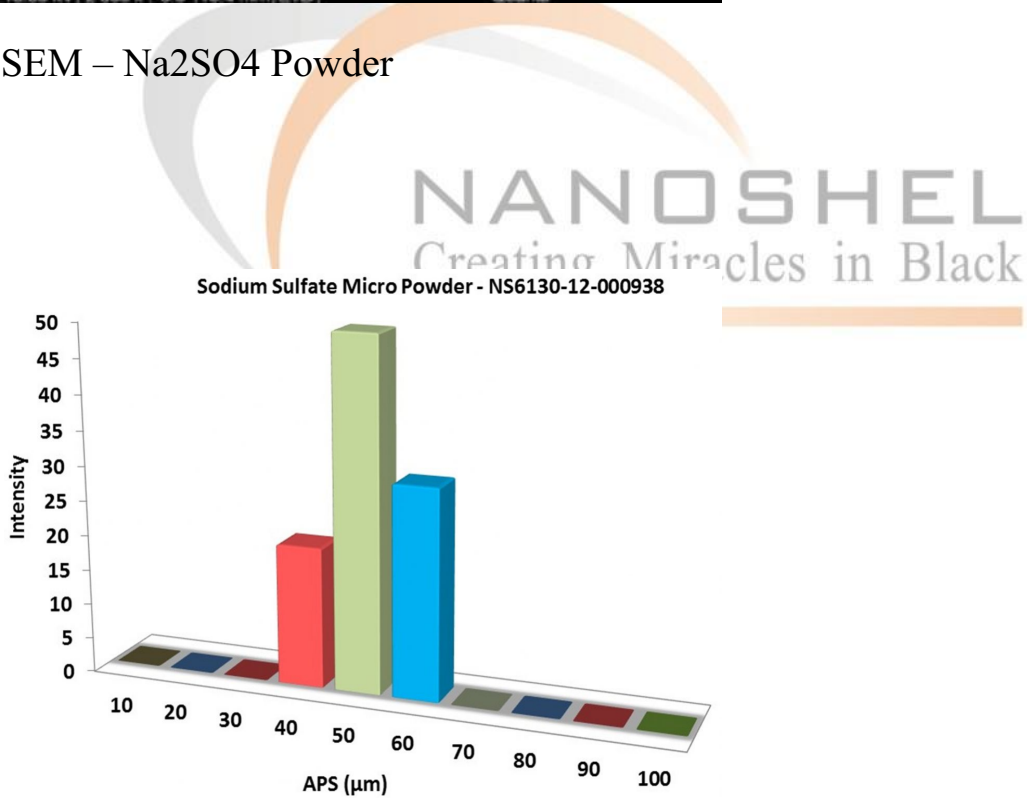
Product	:	Sodium Sulfate Powder
Stock No	:	NS6130-12-000938
CAS	:	7757-82-6
APS	:	40-60µm
Purity	:	99.9%
Molecular Formula	:	Na ₂ SO ₄
Molecular Weight	:	142.04g/mol
Form	:	Powder
Color	:	White
Density	:	2.664 g/cm ³
Melting Point	:	884 °C
Boiling Point	:	1429 °C
Resistivity	:	4.33 µΩ-cm
Solubility	:	Soluble in water, glycerol
Main Inspect Verifier	:	Manager QC

Note: Product Specification are subject to amendment and may change over time

Characterization of Sodium Sulfate Powder



SEM – Na₂SO₄ Powder



Particles Size Analysis – Sodium Sulfate Powder