

## Specification Sheet

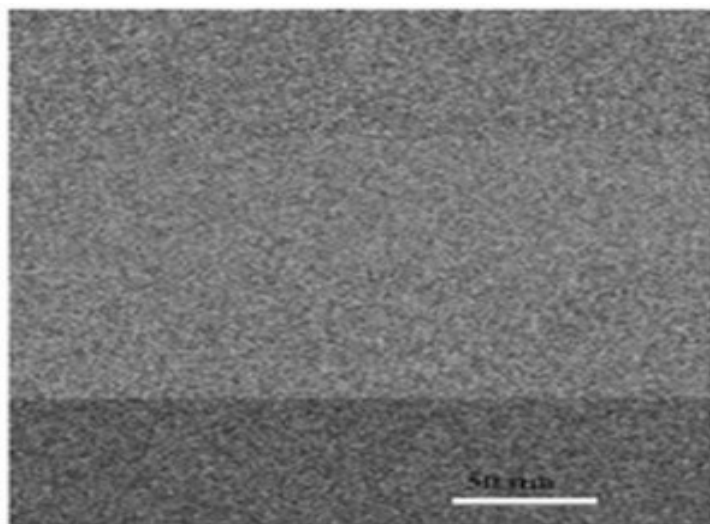
CdTe Quantum Dot Solar Cell

Stock No: NS6130-02-265, CAS: 1306-25-8

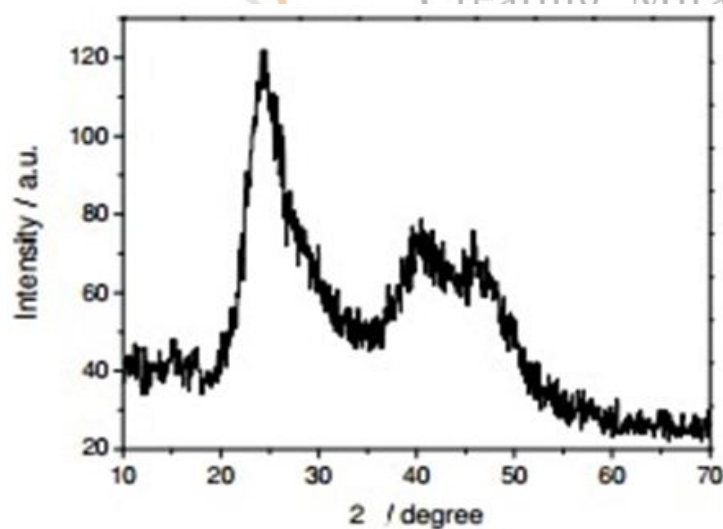
<b>Product</b>	:	<b>CdTe Quantum Dots solar cells</b>
Stock No.	:	NS6130-02-265
CAS	:	1306-25-8
APS	:	4-5nm
Linear Formula	:	CdTe
Form	:	Powder
Color	:	Faint Green to Very Dark Green
Yield	:	36%
Formula Weight	:	240.01 g/mol
Emission Peak	:	515-525 nm
Fluorescence	:	$\lambda_{em}$ 520 nm
Storage Temperature	:	2-8°C
<b>Main Inspect Verifier</b>	:	<b>Manager QC</b>

**Note:** Product Specification are subject to amendment and may change over time

## Characterization of CdTe Quantum Dot Solar Cell



SEM - CdTe Core-Type Quantum Dots



XRD pattern of CdTe QD