

Specification Sheet

Cadmium Telluride

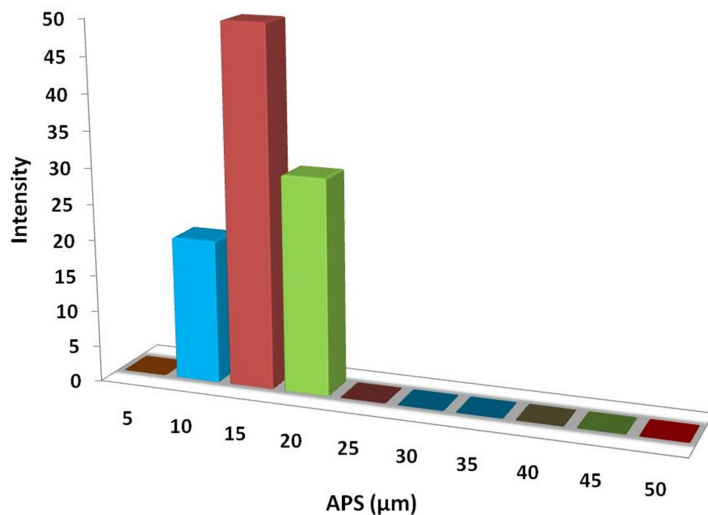
(CdTe, Purity: 99.9%, APS: 10-20 μ m)

Stock No: NS6130-12-000830 , CAS: 1306-25-8

Product	:	Cadmium Telluride
Stock No	:	NS6130-12-000830
CAS	:	1306-25-8
Purity	:	99.9%
APS	:	10-20 μ m
Molecular Formula	:	CdTe
Molecular Weight	:	240.01 g/mol
Form	:	Dry Powder
Density	:	5.85 g/cm ³
Melting Point	:	1,041 °C
Boiling Point	:	1,050 °C
Thermal Conductivity	:	6.2 W/m·K at 293 K
Solubility	:	Insoluble in water
Main Inspect Verifier	:	Manager QC

Note: Product Specification are subject to amendment and may change over time

Characterization of Cadmium Telluride



Particles Size Analysis - CdTe Powder

