

Specification Sheet

Lithium Molybdate Powder

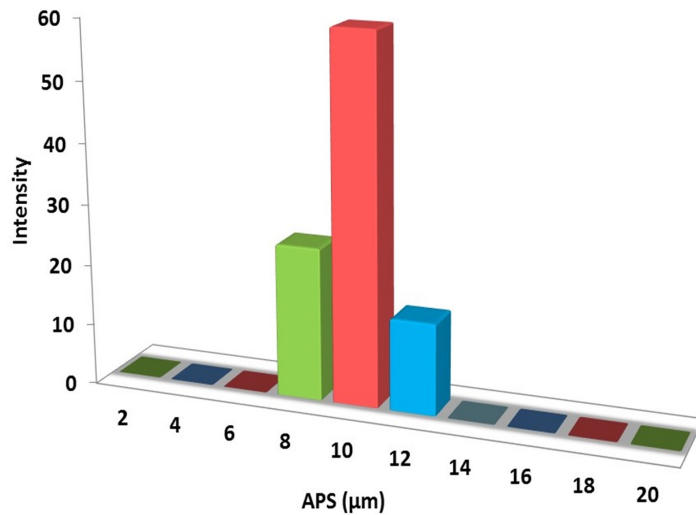
(Li₂MoO₄, Purity: 99%, APS: 10μm)

Stock No: NS6130-12-000687, CAS: 13568-40-6

Product	:	Lithium Molybdate Powder
Stock No	:	NS6130-12-000687
CAS	:	13568-40-6
Purity	:	99%
APS	:	10μm
Molecular Formula	:	Li ₂ MoO ₄
Molecular Weight	:	173.82 g/ mol
Form	:	Powder
Color	:	White
Density	:	2.6 g/ cm ³
Melting Point	:	705 °C
Solubility	:	Insoluble in Water
Main Inspect Verifier	:	Manager QC

Note: Product Specification are subject to amendment and may change over time

Characterization of Lithium Molybdate Powder



Particles Size Analysis

