

## Specification Sheet

Copper Chloride

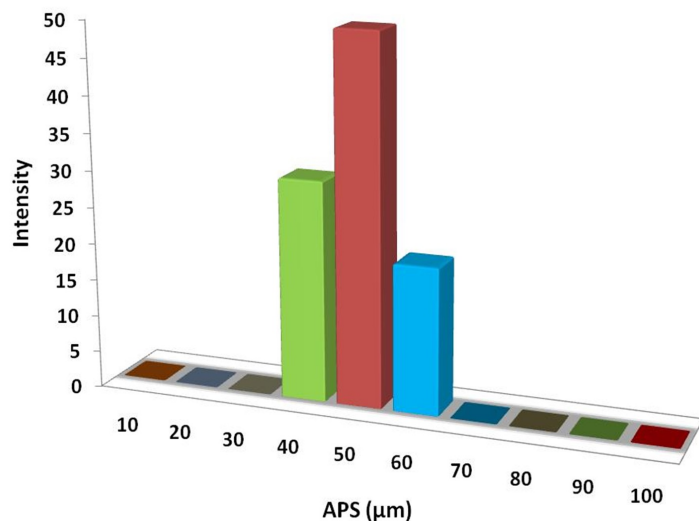
(CuCl<sub>2</sub>, Purity: 99.9%, APS: 40-60μm)

Stock No: NS6130-12-001115, CAS: 7447-39-4

<b>Product</b>	:	<b>Copper Chloride</b>
Stock No	:	NS6130-12-001115
CAS	:	7447-39-4
Purity	:	99.9%
APS	:	40-60μm
Molecular Formula	:	CuCl <sub>2</sub>
Molecular Weight	:	134.45g/mol
Form	:	Powder
Color	:	Yellow-Brown
Density	:	3.38g/cm <sup>3</sup>
Melting Point	:	498°C
Boiling Point	:	993°C
Solubility	:	Soluble in methanol, Ethanol
<b>Main Inspect Verifier</b>	:	<b>Manager QC</b>

**Note:** Product Specification are subject to amendment and may change over time

## Characterization of Copper Chloride



## Particles Size Analysis - CuCl<sub>2</sub> Powder

