

# Specification Sheet

## Single Crystal Silicon Wafer

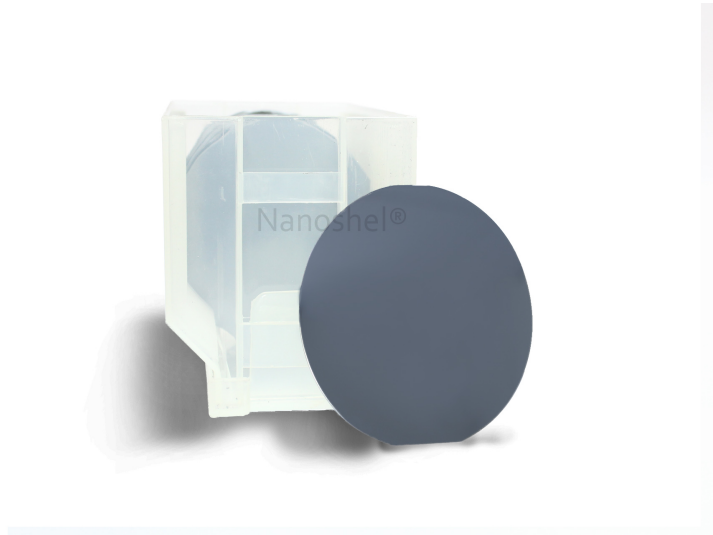
(Si, Dia: 200mm  $\pm$  0.2mm, Undoped)

Stock No: NS6130-10-1089, CAS: 7440-21-3

<b>Product</b>	:	<b>Single Crystal Silicon Wafer</b>
Stock No	:	NS6130-10-1089
CAS	:	7440-21-3
Diameter	:	200mm $\pm$ 0.2mm
Doping	:	Undoped
Orientation	:	$\langle 100 \rangle \pm 0.5^\circ$
Growth Method	:	FZ
Notch Orientation	:	$\langle 110 \rangle \pm 1.0^\circ$
Center Thickness	:	300 $\mu$ m – 500 $\mu$ m
Surface	:	Double side polished
Micro Roughness	:	$\leq 18\text{A}$
Laser Marking	:	None
Standard Tolerance	:	$\pm 0.5^\circ$
Resistivity	:	$> 10000\Omega/\text{cm}$
Bow	:	30 $\mu$ m
Edge Profile	:	Rounded
<b>Main Inspect Verifier</b>	:	<b>Manager QC</b>

**Note:** Product Specification are subject to amendment and may change over time

## Characterization of Single Crystal Silicon Wafer



Single Crystal Silicon Wafer



**NANOSHEL**  
Creating Miracles in Black