

## Specification Sheet

Palladium on Alumina Catalyst

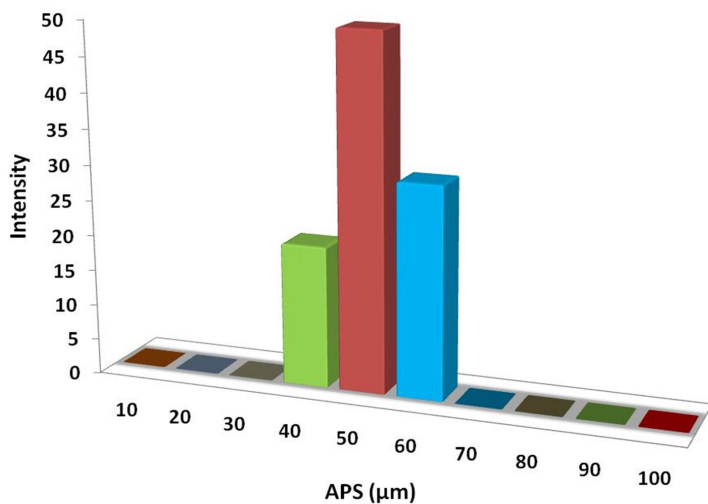
(Pd/Al<sub>2</sub>O<sub>3</sub>, Purity: 99.9%, APS: 40-60 $\mu$ m)

Stock No: NS6130-12-001241, CAS: 7440-05-3

<b>Product</b>	:	<b>Palladium on Alumina Catalyst</b>
Stock No	:	NS6130-12-001241
CAS	:	7440-05-3
Purity	:	99.9%
APS	:	40-60 $\mu$ m
Molecular Formula	:	Pd/Al <sub>2</sub> O <sub>3</sub>
Palladium on Alumina	:	1%, 2%, 3%, 4%, 5%, 10%
Density	:	$\geq$ 0.55 g/ml
Surface Area, BET	:	$\geq$ 120 m <sup>2</sup> /g
<b>Main Inspect Verifier</b>	:	<b>Manager QC</b>

**Note:** Product Specification are subject to amendment and may change over time

## Characterization of Palladium on Alumina Catalyst



## Particles Size Analysis - Pd/A12O3 Powder

