

Specification Sheet

Tungsten Disulfide Coating

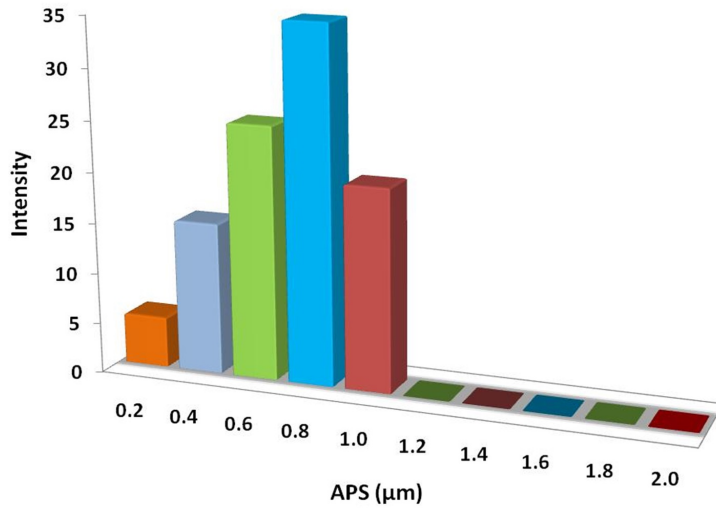
(WS₂, Purity: >99%, APS: < 1μm)

Stock No: NS6130-12-000869, CAS: 12138-09-9

Product	:	Tungsten Disulfide Coating
Stock No.	:	NS6130-12-000869
CAS	:	12138-09-9
APS	:	< 1μm
Purity	:	>99%
Molecular Formula	:	WS ₂
Molecular Weight	:	247.97 g/mol
Form	:	Powder
Color	:	Blue/Gray
Density	:	7.4 g/cm ³
Melting Point	:	1250 °C
Solubility	:	Insoluble in water
Main Inspect Verifier	:	Manager QC

Note: Product Specification are subject to amendment and may change over time

Characterization of Tungsten Disulfide Coating



Particles Size Analysis - WS2 Powder



Tungsten Disulfide