

## Specification Sheet

Lithium Nickel Cobalt Manganese Oxide NCM532

(LiNiMnCoO<sub>2</sub>, Purity: 99.9%, APS: 10.8um)

Stock No: NS6130-12-001437, CAS: 346417-97-8

<b>Product</b>	:	<b>Lithium Nickel Cobalt Manganese Oxide NCM532</b>
Stock No	:	NS6130-12-001437
CAS	:	346417-97-8
Purity	:	99.9%
APS	:	10.8um
Molecular Formula	:	LiNiMnCoO <sub>2</sub>
Appearance	:	Black Powder
pH	:	11.70
Tap Density	:	2.30±0.2g/cm <sup>3</sup>
Cycle Life	:	1000–2000
Flash Point	:	26.1°C (79.0 °F)
Voltages	:	3.60V, 3.70V nominal;
Typical operating range	:	3.0–4.2V/cell, or higher
Specific energy (Capacity)	:	150–220Wh/kg
Charge (C-Rate)	:	0.7–1C, charges to 4.20V, some go to 4.30V; 3h Charge Typical. Charge current above 1C shortens Battery
Discharge (C-Rate)	:	2.50V cut-off
Thermal Runaway	:	210°C (410°F) typical.High charge Promotes thermal runaway
Application	:	E-bikes, medical devices, EVs, industrial
<b>Main Inspect Verifier</b>	:	<b>Manager QC</b>

**Intelligent Materials Pvt. Ltd.**

www.nanoshel.com, sales@nanoshel.com



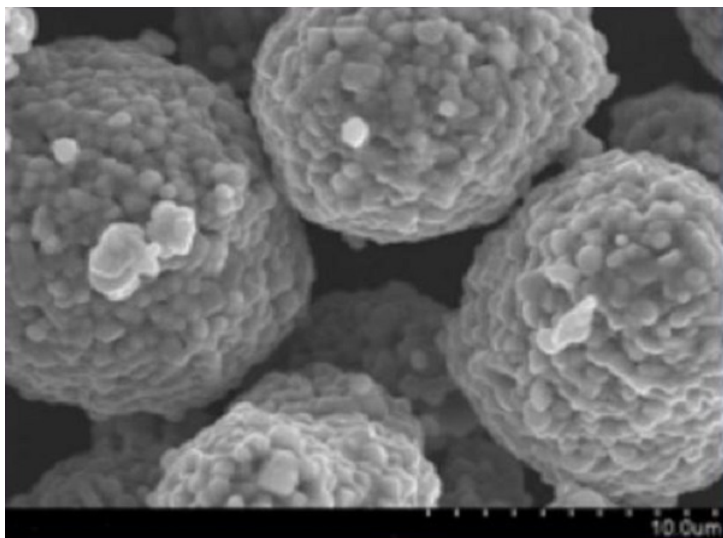
**Note:** Product Specification are subject to amendment and may change over time



---

**NANOSHEL LLC** *(In Collaboration)*  
3422 Old Capitol Trial Suit 1305, Wilmington DE - 19808 USA  
(001) 302 652-3464, + 91 9779-880077

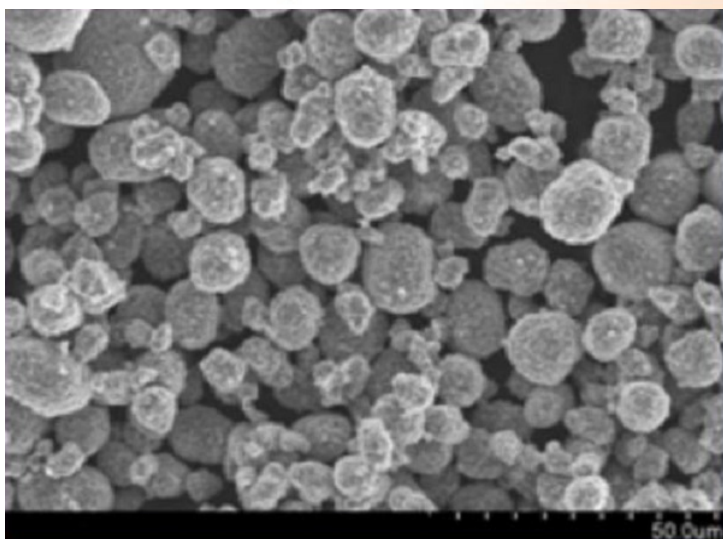
## Characterization of Lithium Nickel Cobalt Manganese Oxide NCM532



SEM - NCM532



**NANOSHEL**  
Creating Miracles in Black



SEM - NCM532