

## Specification Sheet

### Lead Sulfide Nanoparticles

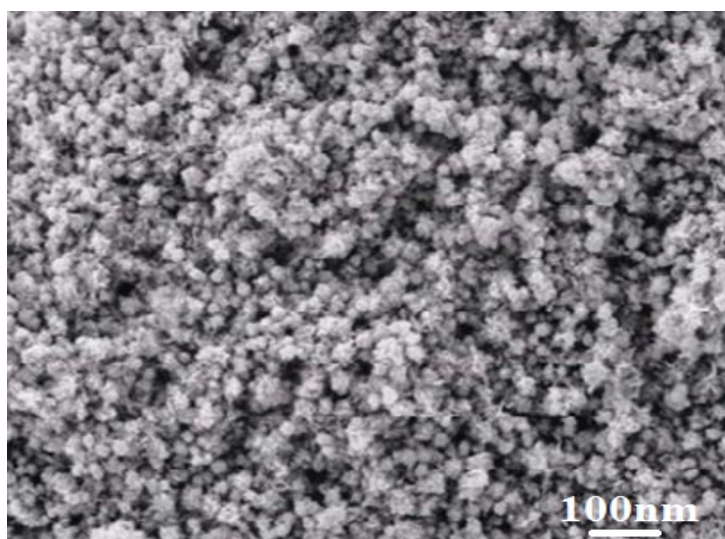
(PbS, Purity: 99.9%, APS: < 100nm)

Stock No: NS6130-02-240, CAS: 1314-87-0

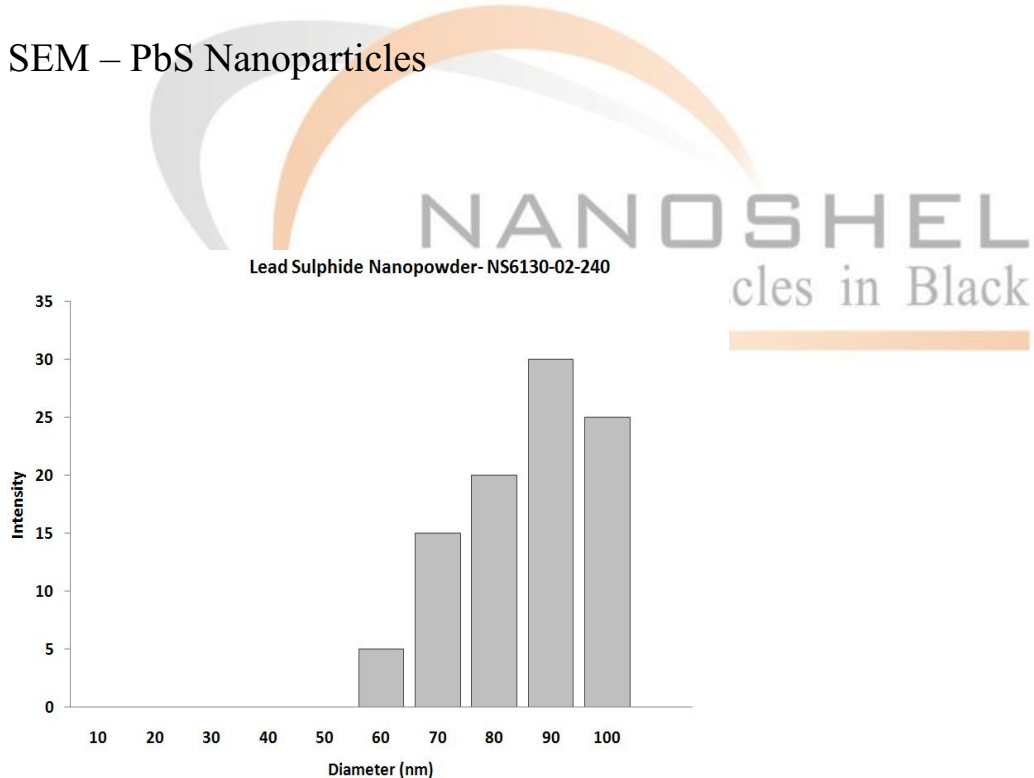
<b>Product</b>	:	<b>Lead Sulfide Nanoparticles</b>
Stock No.	:	NS6130-02-240
CAS	:	1314-87-0
APS	:	< 100 nm
Purity	:	99.9 %
Molecular Weight	:	239.30 g/mol
Color	:	Black
Density	:	7.60 g/cm <sup>3</sup>
Melting Point	:	1118 °C
Boiling Point	:	1281 °C
Solubility	:	Insoluble in water
<b>Main Inspect Verifier</b>	:	<b>Manager QC</b>

**Note:** Product Specification are subject to amendment and may change over time

## Characterization of Lead Sulfide Nanoparticles



### SEM – PbS Nanoparticles



### Lead Sulphide – Size Analysis