

Specification Sheet

Tin II Sulfide Powder

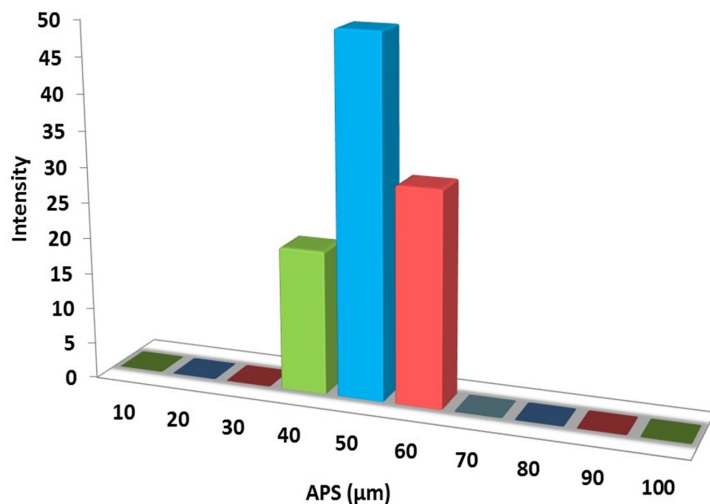
(SnS, Purity: 99.9%, APS: 40-60 μ m)

Stock No: NS6130-12-001509, CAS: 1314-95-0

Product	:	Tin II Sulfide Powder
Stock No.	:	NS6130-12-001509
CAS	:	1314-95-0
Purity	:	99.9%
APS	:	40-60 μ m
Molecular Formula	:	SnS
Molecular weight	:	150.77g/mol
Density	:	5.22g/cm ³
Melting point	:	882°C
Boiling Point	:	1230°C
Solubility	:	Insoluble in water
Main Inspect Verifier	:	Manager QC

Note: Product Specification are subject to amendment and may change over time

Characterization of Tin II Sulfide Powder



Particles Size Analysis

