

Specification Sheet

Lead Selenide Nanoparticles

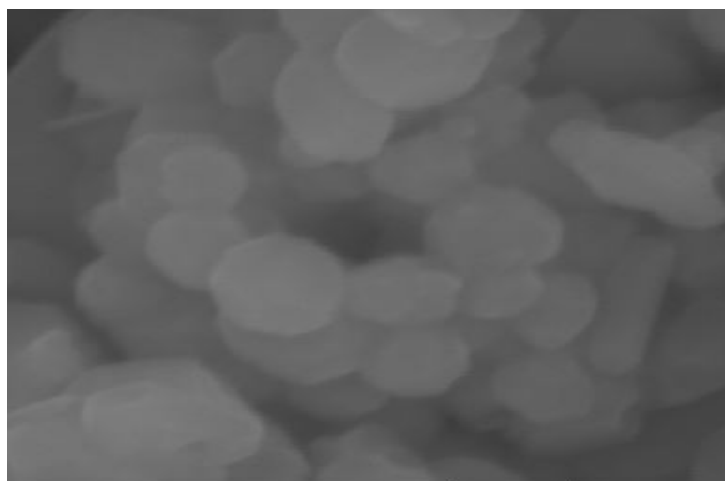
(PbSe, Purity: 99.9%, APS: < 100nm)

Stock No: NS6130-02-241, CAS: 12069-00-0

Product	:	Lead Selenide Nanoparticles
Stock No.	:	NS6130-02-241
CAS	:	12069-00-0
APS	:	< 100 nm
Purity	:	99.9 %
Molecular Formula	:	PbSe
Molecular Weight	:	286.16 g/mol
Form	:	Powder
Color	:	Black
Density	:	8.1 g/cm ³
Melting Point	:	1078 °C
Solubility	:	Insoluble in water
Main Inspect Verifier	:	Manager QC

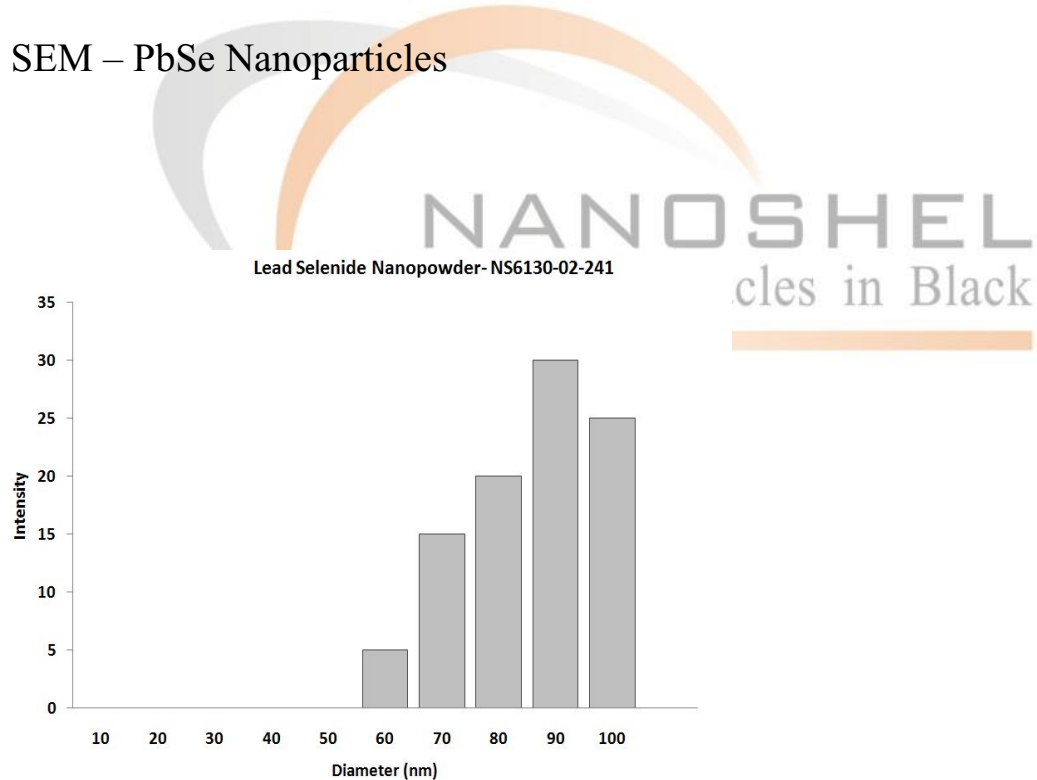
Note: Product Specification are subject to amendment and may change over time

Characterization of Lead Selenide Nanoparticles



SEM HV: 20.00 kV WD: 3.827 mm 200 nm
View field: 1.445 μ m Det: InBeam
SEM MAG: 150.00 kx Date(m/d/y): 05/19/12

SEM – PbSe Nanoparticles



Lead Selenide Nanoparticles – Size Analysis