

Specification Sheet

Molybdenum Disulphide Nanopowder

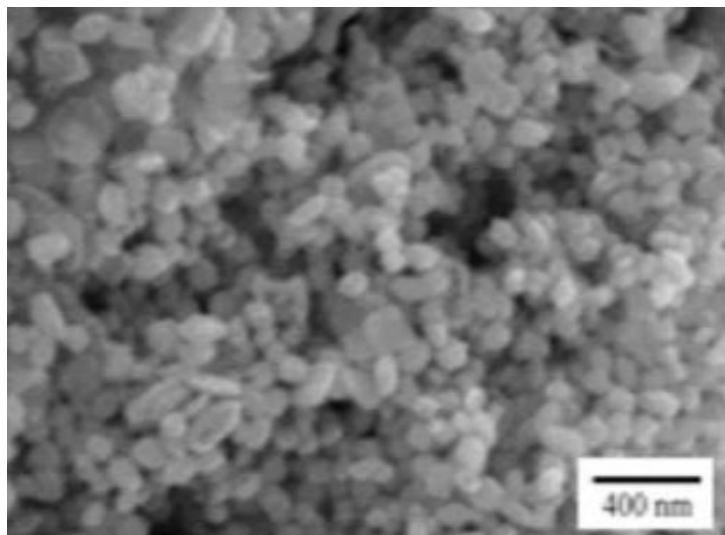
(MoS₂, Purity: 99.9%, APS: 80-100nm)

Stock No: NS6130-02-242, CAS: 1317-33-5

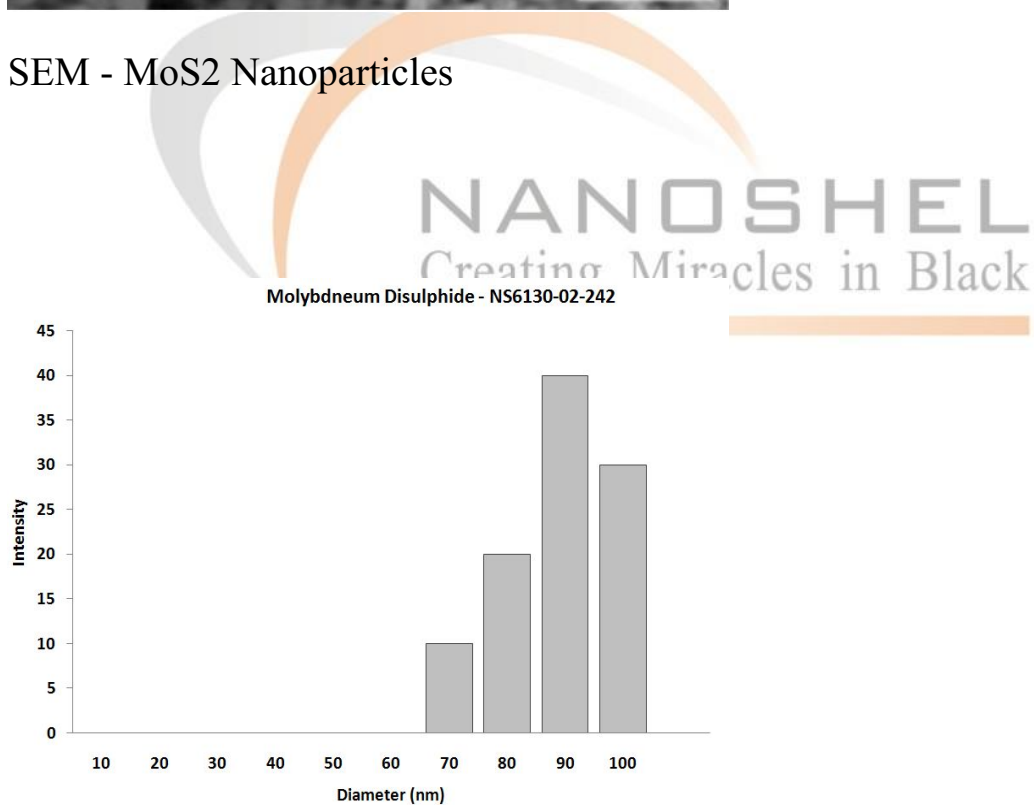
Product	:	Molybdenum Disulphide Nanopowder
Stock No.	:	NS6130-02-242
CAS	:	1317-33-5
APS	:	80-100 nm
Purity	:	99.9 %
Molecular Formula	:	MoS ₂
Molecular Weight	:	160.07 g/mol
Form	:	Powder
Color	:	Black
Density	:	4.8 g/cm ³
Melting Point	:	1185 °C
Solubility	:	Insoluble in water
Main Inspect Verifier	:	Manager QC

Note: Product Specification are subject to amendment and may change over time

Characterization of Molybdenum Disulphide Nanopowder



SEM - MoS₂ Nanoparticles



Particles Size Analysis



Molybdenum Disulphide

