

## Specification Sheet

### Tungsten Disulfide WS2 Powder

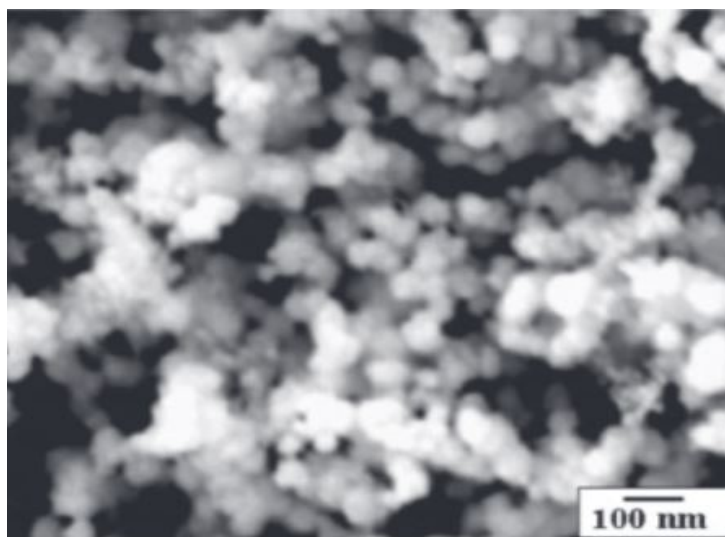
(WS2, Purity: 99.9%, APS: 80-100nm)

Stock No: NS6130-02-243, CAS: 12138-09-9

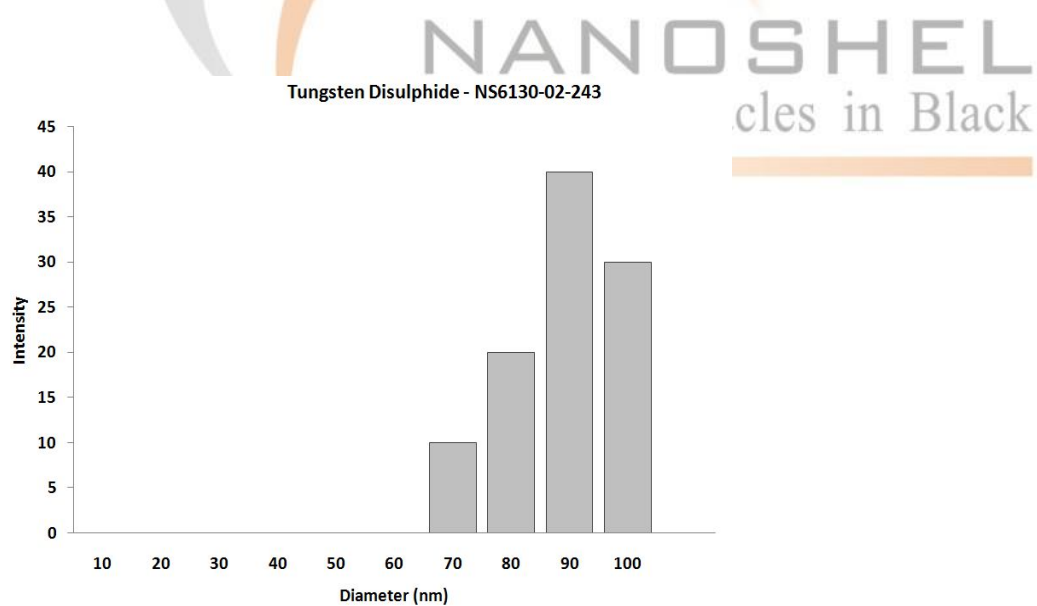
<b>Product</b>	:	<b>Tungsten Disulfide WS2 Powder</b>
Stock No.	:	NS6130-02-243
CAS	:	12138-09-9
APS	:	80-100 nm
Purity	:	99.9 %
Molecular Formula	:	WS2
Molecular Weight	:	247.98 g/mol
Form	:	Powder
Color	:	Gray-Black
Melting Point	:	1250 °C
Solubility	:	Insoluble in water
<b>Main Inspect Verifier</b>	:	<b>Manager QC</b>

**Note:** Product Specification are subject to amendment and may change over time

## Characterization of Tungsten Disulfide WS<sub>2</sub> Powder



SEM – WS<sub>2</sub> Nanoparticles



Tungsten Disulfide – Size Analysis