

## Specification Sheet

**Cadmium Sulfide Selenide Nanoparticles**

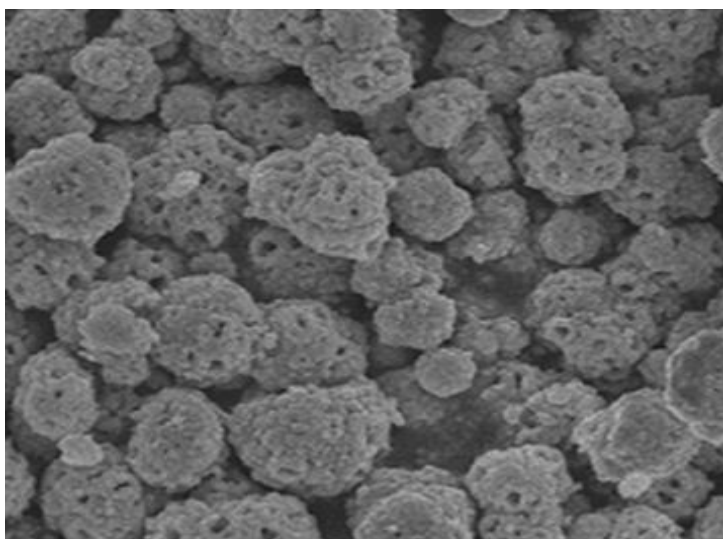
(CdSSe, Purity: 99.9%, APS: < 100nm)

Stock No: NS6130-02-246, CAS: 1306-23-6

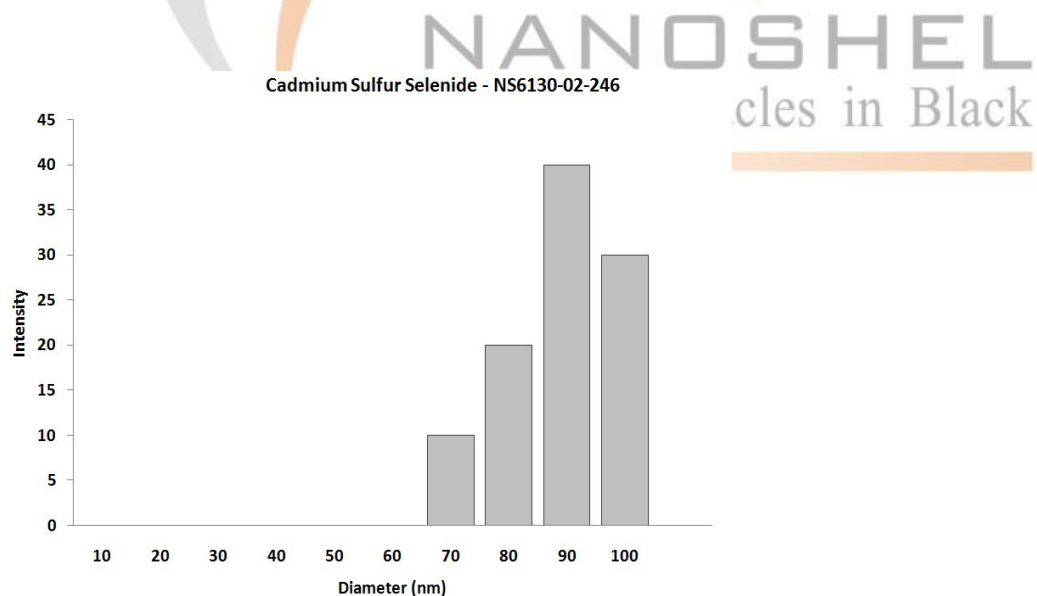
<b>Product</b>	:	<b>Cadmium Selenide Sulfide Nanoparticles</b>
Stock No.	:	NS6130-02-246
CAS	:	12214-12-9
APS	:	< 100 nm
Purity	:	99.9 %
Molecular Formula	:	Cd <sub>2</sub> SSe
Molecular Weight	:	335.84 g/mol
Form	:	Powder
Color	:	White
Density	:	4.7-5.1 g/cm <sup>3</sup>
Heat Resistance	:	≥700 °C
<b>Main Inspect Verifier</b>	:	<b>Manager QC</b>

**Note:** Product Specification are subject to amendment and may change over time

## Characterization of Cadmium Sulfide Selenide Nanoparticles



Cadmium Sulfide Selenide – SEM



Cadmium Sulfide Selenide Powder – Size Analysis