

## Specification Sheet

Al<sub>2</sub>[

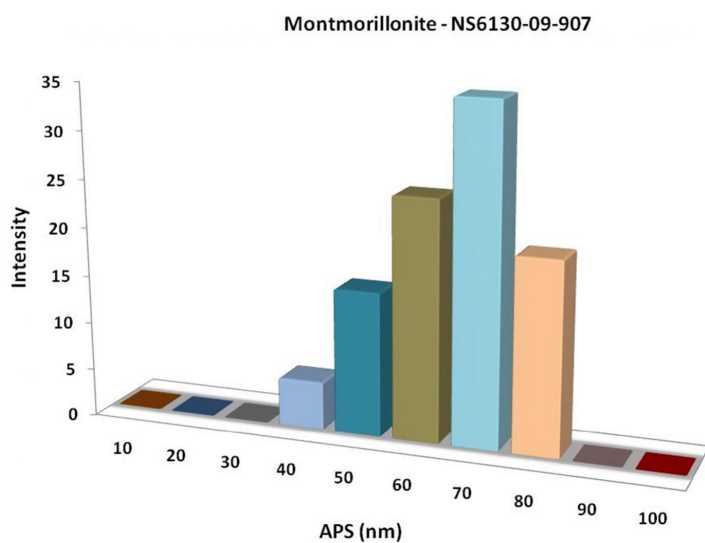
(OH)<sub>2</sub>|Si<sub>4</sub>O<sub>10</sub>].nH<sub>2</sub>O, >99%, < 80nm

Stock No: NS6130-09-907, CAS: 1318-93-0

<b>Product</b>	:	<b>Montmorillonite Clay</b>
Stock No	:	NS6130-09-907
CAS	:	1318-93-0
Purity	:	>99%
APS	:	< 80nm
Molecular Formula	:	Al <sub>2</sub> [(OH) <sub>2</sub>  Si <sub>4</sub> O <sub>10</sub> ].nH <sub>2</sub> O
Form	:	Powder
Color	:	Beige-tan
Density	:	1.7-2.7g/cm <sup>3</sup>
pH	:	Averages 8.3
Solubility	:	Insoluble in water
<b>Main Inspect Verifier</b>	:	<b>Manager QC</b>

**Note:** Product Specification are subject to amendment and may change over time

## Characterization of Al<sub>2</sub>[



## Particles Size Analysis - Montmorillonite Clay

