

Specification Sheet

Lead Telluride Nanocrystals

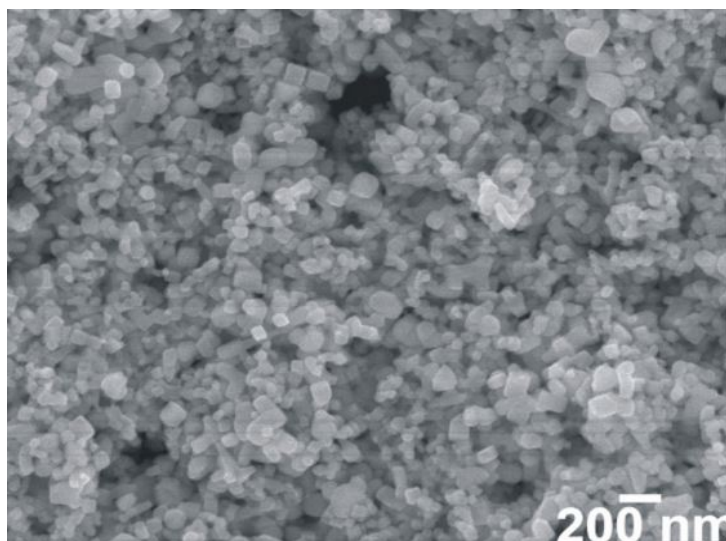
(PbTe, Purity: 99.9%, APS: 80-100nm)

Stock No: NS6130-02-274, CAS: 1314-91-6

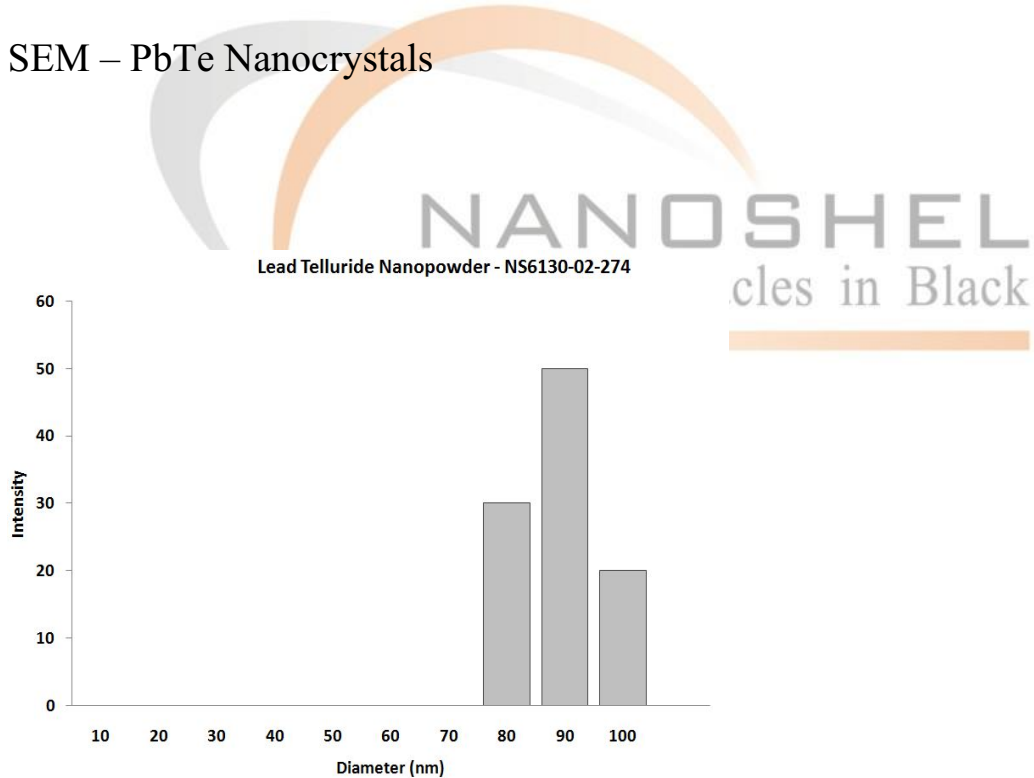
Product	:	Lead Telluride Nanocrystals
Stock No.	:	NS6130-02-274
CAS	:	1314-91-6
APS	:	80-100nm
Purity	:	99.9 %
Molecular Weight	:	334.80 g/mol
Form	:	Powder
Color	:	Silver-gray
Density	:	8.164 g/cm ³
Melting Point	:	924 °C
Solubility	:	Insoluble in water
Main Inspect Verifier	:	Manager QC

Note: Product Specification are subject to amendment and may change over time

Characterization of Lead Telluride Nanocrystals



SEM – PbTe Nanocrystals



Lead Telluride Nanocrystals – Size Analysis