

## Specification Sheet

### Alumina Slurry Polishing

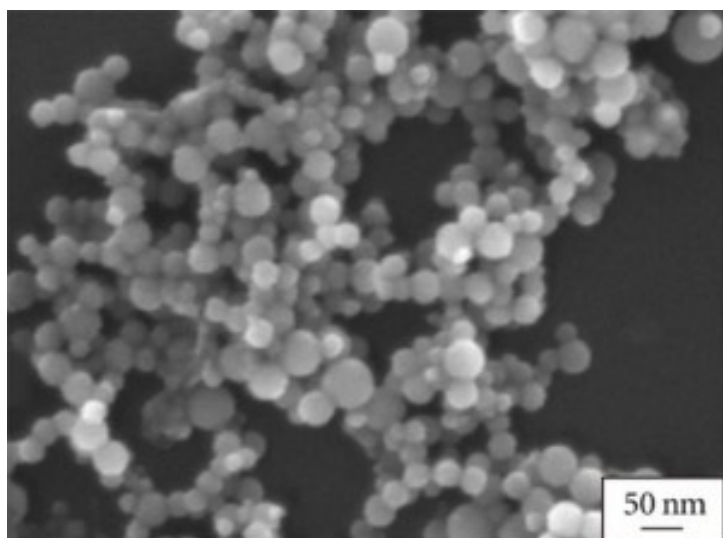
(Al<sub>2</sub>O<sub>3</sub>, Purity: 99.9 %, APS: 50-80nm)

Stock No: NS6130-04-425, CAS: 1344-28-1

<b>Product</b>	:	<b>Alumina Slurry Polishing</b>
Stock No	:	NS6130-04-425
CAS	:	1344-28-1
APS	:	50-80nm
Purity	:	99.9%
Molecular Formula	:	Al <sub>2</sub> O <sub>3</sub>
Color	:	White
pH value	:	4-5
Concentration	:	20 wt% (Available as per Customer requirement)
Dispersing Agent	:	Organic Solvent (DMF), IPA Ethanol, Water (ddH <sub>2</sub> O)
<b>Main Inspect Verifier</b>	:	<b>Manager QC</b>

**Note:** Product Specification are subject to amendment and may change over time

## Characterization of Alumina Slurry Polishing



SEM - Aluminium oxide



**NANOSHEL**  
Creating Miracles in Black