

Specification Sheet

Tin Selenide Powder

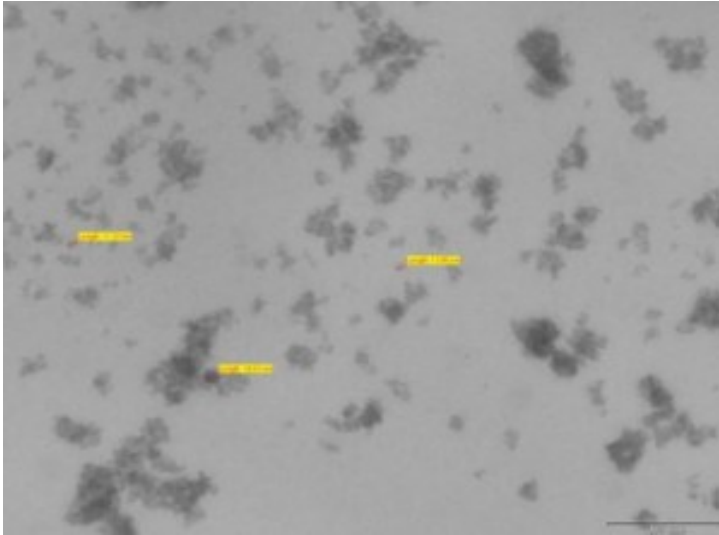
(SnSe, Purity: 99.9%, APS: < 100 μm)

Stock No: NS6130-12-000159, CAS: 1315-06-6

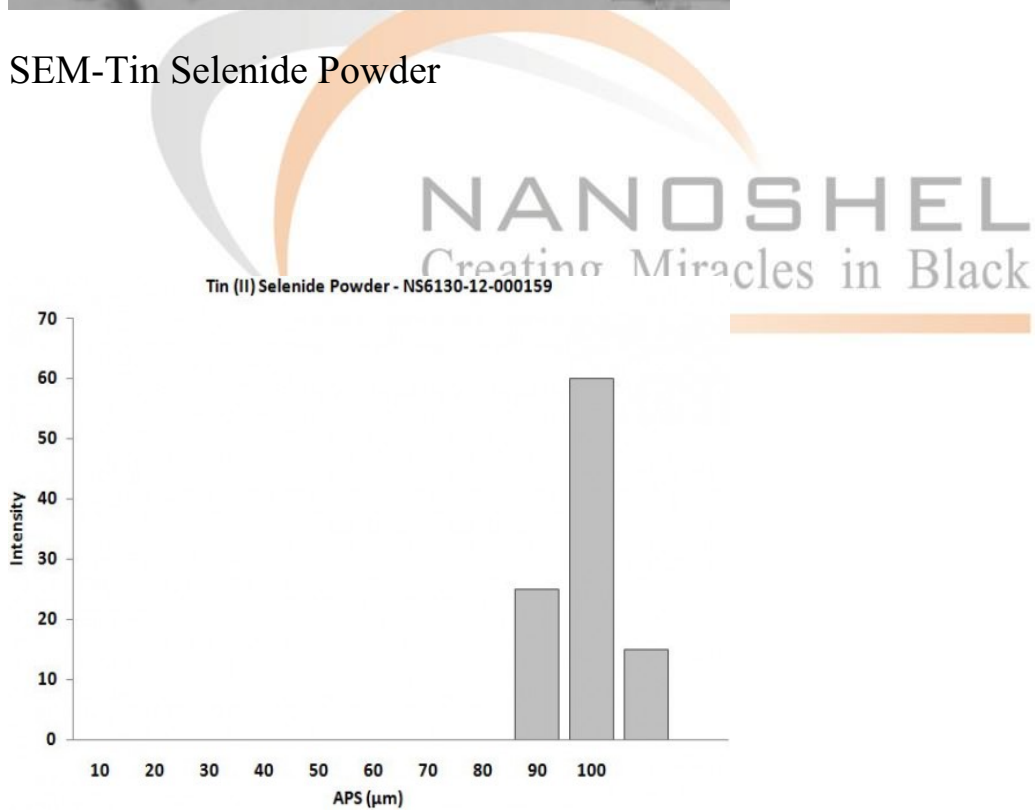
Product	:	Tin (II) Selenide Powder
Stock No	:	NS6130-12-000159
CAS	:	1315-06-6
Purity	:	99.9%
APS	:	< 100 μm
HS Code	:	38220090
Molecular Formula	:	SnSe
Molecular Weight	:	197.67 g/mol
Form	:	Powder
Color	:	White - off-white
Appearance	:	Steel Gray
Density	:	6.179 g/cm ³
Melting Point	:	861 °C
Flash Point	:	378 °C
Odor	:	Odorless Powder
Crystallographic Structure	:	Monoclinic
Crystal Structure	:	Orthorhombic
Solubility in Water	:	Insoluble
Main Inspect Verifier	:	Manager QC

Note: Product Specification are subject to amendment and may change over time

Characterization of Tin Selenide Powder



SEM-Tin Selenide Powder



Particles Size of Analysis-Tin Selenide Powder