

## Specification Sheet

Copper Silicide Powder

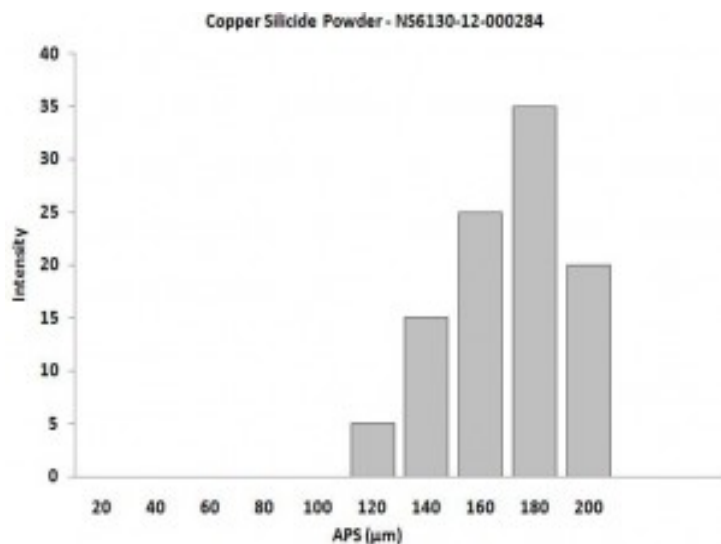
(Cu<sub>5</sub>Si, APS: < 200 μm, Purity: 99.9%)

Stock No: NS6130-12-000284, CAS: 12159-07-8

<b>Product</b>	:	<b>Copper Silicide Powder</b>
Stock No	:	NS6130-12-000284
CAS	:	12159-07-8
Purity	:	99.9%
APS	:	< 200 μm
Molecular Formula	:	Cu <sub>5</sub> Si
Molecular Weight	:	345.8155 g/mol
Form	:	Powder
Color	:	Grey
Melting Point	:	825 °C
Solubility in Water	:	Insoluble
<b>Main Inspect Verifier</b>	:	<b>Manager QC</b>

**Note:** Product Specification are subject to amendment and may change over time

## Characterization of Copper Silicide Powder



Particles Size of Analysis - Copper Silicide Powder

