

## Specification Sheet

CuIn<sub>x</sub>Ga

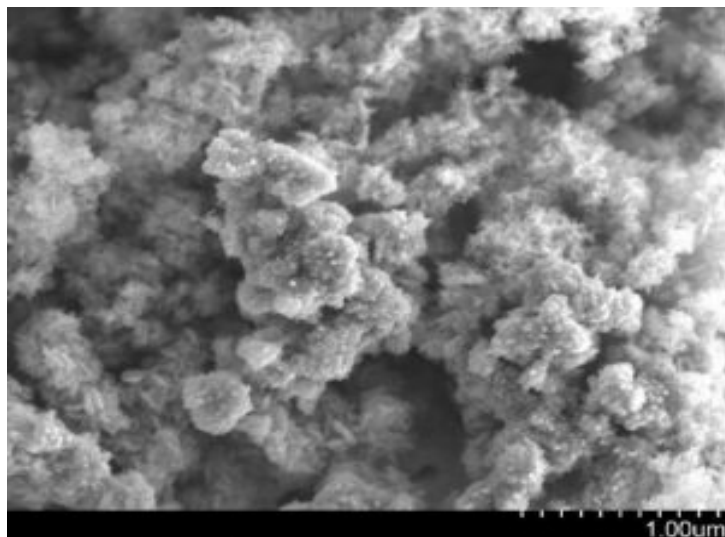
(1-x)Se<sub>2</sub>, Purity: 98%, APS: 1-2μm

Stock No: NS6130-12-000303, CAS: 12018-95-0

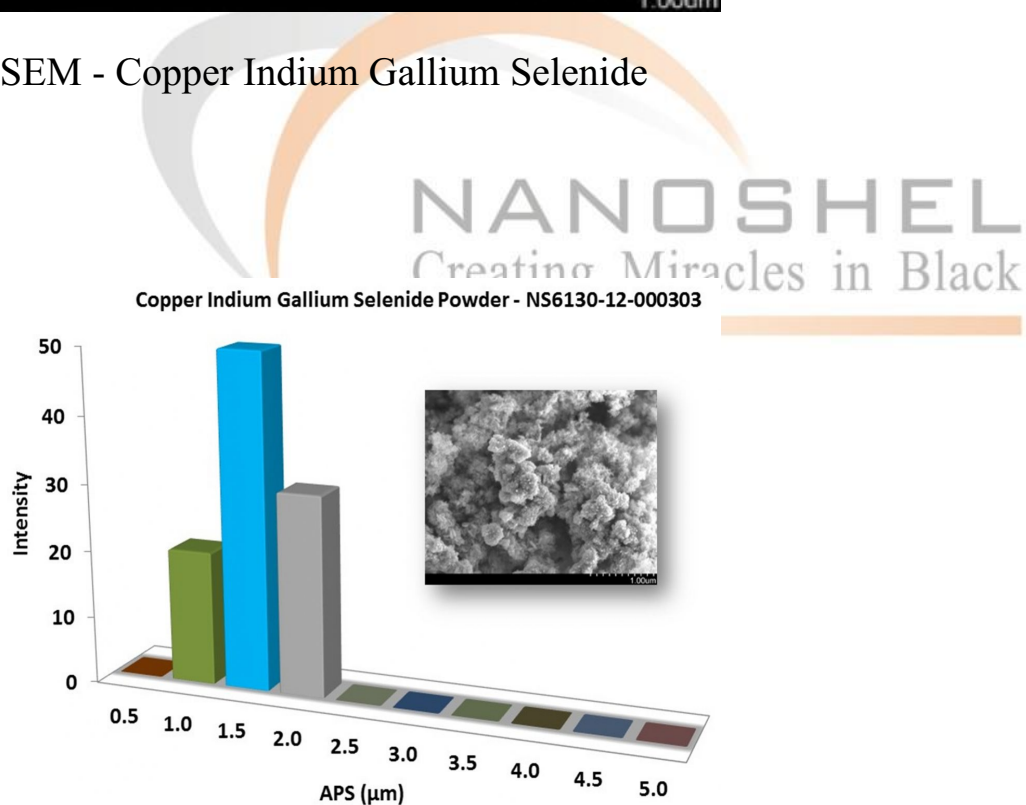
<b>Product</b>	:	<b>Copper Indium Gallium Selenide Powder</b>
Stock No.	:	NS6130-12-000303
CAS	:	12018-95-0
Purity	:	98%
APS	:	1-2μm
Molecular Formula	:	CuIn <sub>x</sub> Ga(1-x)Se <sub>2</sub>
Form	:	Powder
color	:	Silver
Density	:	5.7 g/cm <sup>3</sup>
Melting Point	:	990-1070 °C
<b>Main Inspect Verifier</b>	:	<b>Manager QC</b>

**Note:** Product Specification are subject to amendment and may change over time

## Characterization of $\text{CuIn}_x\text{Ga}$



SEM - Copper Indium Gallium Selenide



Particles Size Analysis - Copper Indium Gallium Selenide