

Specification Sheet

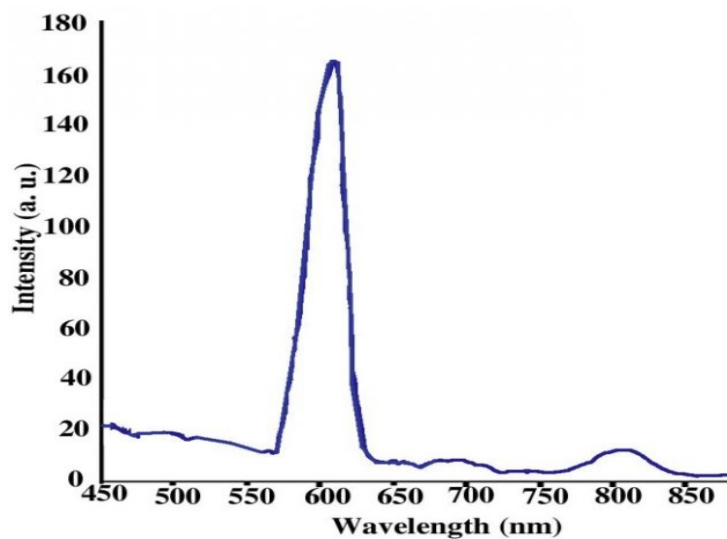
Cadmium Selenide /Zinc Sulphide

Stock No: NS6130-12-000124, CAS: 1306-24-7

Product	:	Cadmium Selenide /Zinc Sulphide
Stock No.	:	NS6130-12-000124
CAS	:	1306-24-7
Purity	:	99.9%
Composition	:	CdSe/ZnS
Emission Peak	:	600nm
Quantum Yield	:	80-90%
Average Particle Size (FWHM)	:	25-30nm
Application	:	Cell Imaging Application
Solvent	:	Toulene
Main Inspect Verifier	:	Manager QC

Note: Product Specification are subject to amendment and may change over time

Characterization of Cadmium Selenide /Zinc Sulphide



Cadmium Selenide /Zinc Sulphide Quantum Dots-600nm



NANOSHEL
Creating Miracles in Black