

## Specification Sheet

Rb<sub>2</sub>Se, >99%, APS: 40-70 $\mu$ m

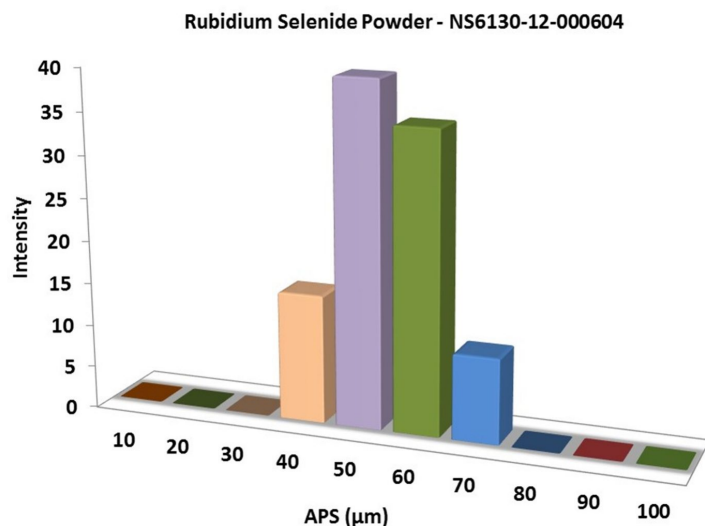
Stock No: NS6130-12-000604, CAS: 31052-43-4

<b>Product</b>	:	<b>Rubidium Selenide Powder</b>
Stock No.	:	NS6130-12-000604
CAS	:	31052-43-4
Purity	:	>99 %
Molecular Formula	:	Rb <sub>2</sub> Se
Molecular Weight	:	249.895 g/mol
Form	:	Powder
Density	:	3220 kg/m <sup>-3</sup>
Melting Point	:	732 °C
<b>Main Inspect Verifier</b>	:	<b>Manager QC</b>

**Note:** Product Specification are subject to amendment and may change over time

**NANOSHEL**  
Creating Miracles in Black

## Characterization of Rb<sub>2</sub>Se, >99%, APS: 40-70μm



## Particles Size Analysis - Rubidium Selenide Powder

