

Specification Sheet

PbS imaging Quantum Dots

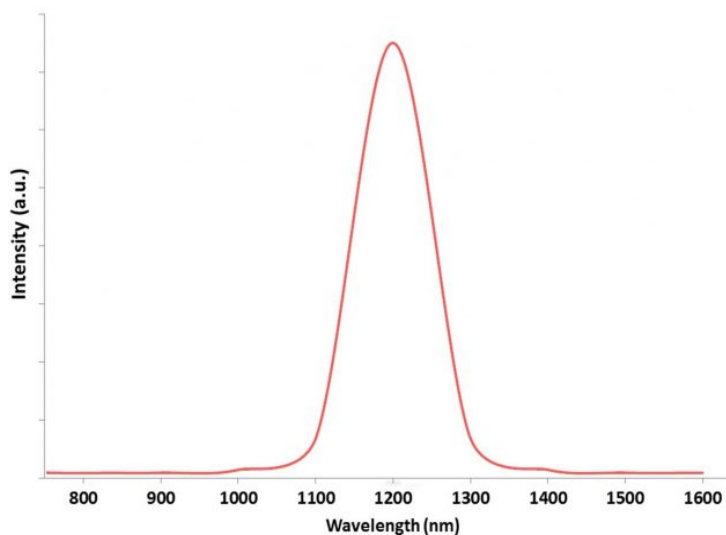
(Lead Sulphide Quantum Dots-1200±50nm)

Stock No: NS6130-12-000180, CAS: 1314-87-0

Product	:	Lead Sulphide Quantum Dots
Stock No.	:	NS6130-12-000180
CAS	:	1314-87-0
Purity	:	99.9%
Composition	:	PbS
Emission Peak	:	1200±50nm
Quantum Yield	:	>40%
Average Particle Size (FWHM)	:	120-150nm
Solvent	:	Toulene
Application	:	Optoelectronic devices
Main Inspect Verifier	:	Manager QC

Note: Product Specification are subject to amendment and may change over time

Characterization of PbS imaging Quantum Dots



Lead Sulphide Quantum Dots- 1200 ± 50 nm



NANOSHEL
Creating Miracles in Black