



CHROMIUM CARBIDE NANOPOWDER

The transition metal carbides, chromium carbide (Cr_3C_2) is a hard refractory ceramic that exhibits excellent strength, hardness, anti-erosion, corrosion properties and permanent non-magnetizability. The most common reported phase for coatings is Cr_3C_2 , which is orthorhombic ($a = 0.283$, $b = 0.554$, and $c = 1.1470$). The orthorhombic Cr_3C_2 occurs extremely rarely as mineral tongbaite. It is highly corrosion-resistant and does not oxidize even at high temperature (1000-1100°C).

Make your innovations better with **NANOSHEL**

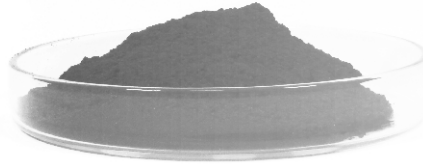


NEXT



APPLICATIONS

- ✓ Shaft Bearing
- ✓ Seals
- ✓ High temperature furnaces
- ✓ Machining molds
- ✓ Piston rings
- ✓ Hydraulic valves
- ✓ Wear protection on aluminum parts
- ✓ Grain refinement in carbide cutting tools



Make your innovations better with NANOSHEL

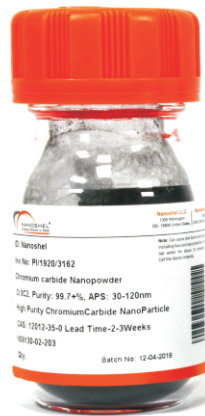
SPECS

- ✓ PPurity: 99.9%
- ✓ Molecular Weight: 180.01 g/mol
- ✓ Color: Gray
- ✓ Density: 6.68g/cm³
- ✓ Melting Point: 1895°C
- ✓ Boiling Point: 3800°C

All types of particles size are available in micro and nano range.

CATALOGUE NO.

• NS6130-02-203



/nanoshel

www.nanoshel.com | sales@nanoshel.com

Tel: 91+9779550077,9779238252



>
NEXT