

LANTHANUM

FLUORIDE APPLICATIONS

Lanthanum fluoride is sometimes used as the "high-index" component in multilayer optical elements such as ultraviolet dichroic and narrowband mirrors. Fluorides are among the most commonly used compounds for UV optical coatings due to their relative inertness and transparency in the far ultraviolet. Multilayer reflectors and antireflection coatings are typically composed of pairs of transparent materials, one with a low index of refraction, and the other with a high index.

Make your innovations better with **NANOSHEL**

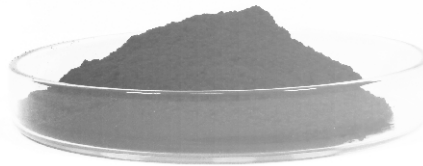


>
NEXT



APPLICATIONS

- ✓ Fibre optics
- ✓ Electrodes
- ✓ Fluorescent lamps
- ✓ Radiation applications



Make your innovations better with NANOSHEL

SPECS

- ✓ Purity: 99.9%
- ✓ Molecular Formula: LaF3
- ✓ Molecular Weight: 195.9g/mol
- ✓ Color: White
- ✓ Density: 5.9g/cm3
- ✓ Melting Point: 1493 °C
- ✓ Boiling Point: 2400 °C

All types of particles size are available in micro and nano range.

CATALOGUE NO.

• NS6130-02-204







[/nanoshel](https://www.nanoshel.com)

www.nanoshel.com | sales@nanoshel.com

Tel: 91+9779550077,9779238252



>
NEXT