

LS

LEAD SULFIDE NANOPARTICLES

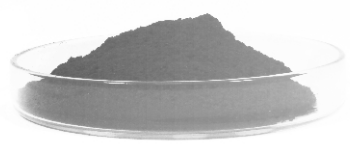
Lead sulfide is one of the oldest and most common detection element materials in various infrared detectors. As an infrared detector, PbS functions as a photon detector, responding directly to the photons of radiation, as opposed to thermal detectors, which respond to a change in detector element temperature caused by the radiation.





APPLICATIONS

- ✓ Infrared detectors
- ✓ Photo optic applications
- ✓ In friction industry for enhancing heat conduction
- ✓ Semiconductor



SPECS

- ✓ Purity: 99.9%
- ✓ Molecular Weight: 239.30 g/mol
- ✓ Color: Black
- ✓ Density: 7.60 g/cm³
- ✓ Melting Point: 1118 °C
- ✓ Boiling Point: 1281 °C

All types of particles size are available in micro and nano range.

CATALOGUE NO.
• NS6130-02-240



    /nanoshel

www.nanoshel.com | sales@nanoshel.com

Tel: 91+9779550077,9779238252



>
NEXT